



GABRIEL SCOTT
EST 2012





The **LUNA** Series

A lighting system with infinite interpretations, the LUNA is a synergy of color, shape, and refracted light. Inspired by a lunar halo, the modular light fixture grows in every direction as its assembly system stems horizontally or vertically, stacking color upon color of various blown-glass shapes. The LUNA series is a glamorous reference to the moon's diffused light and soft glow. Allusive yet glamorous, the LUNA is a new tradition in glass-work and light form.

Available in a variety of colors and shapes, LUNA is a highly customizable fixture.

All GABRIEL SCOTT pieces are handmade in Canada.

GABRIEL SCOTT
EST. 2012






LUNA Chandelier
3-Tier

Satin Copper Hardware
Various Glass Finishes

27" x 58" x 27" H + DROP
68cm x 148cm x 68.5cm H + DROP



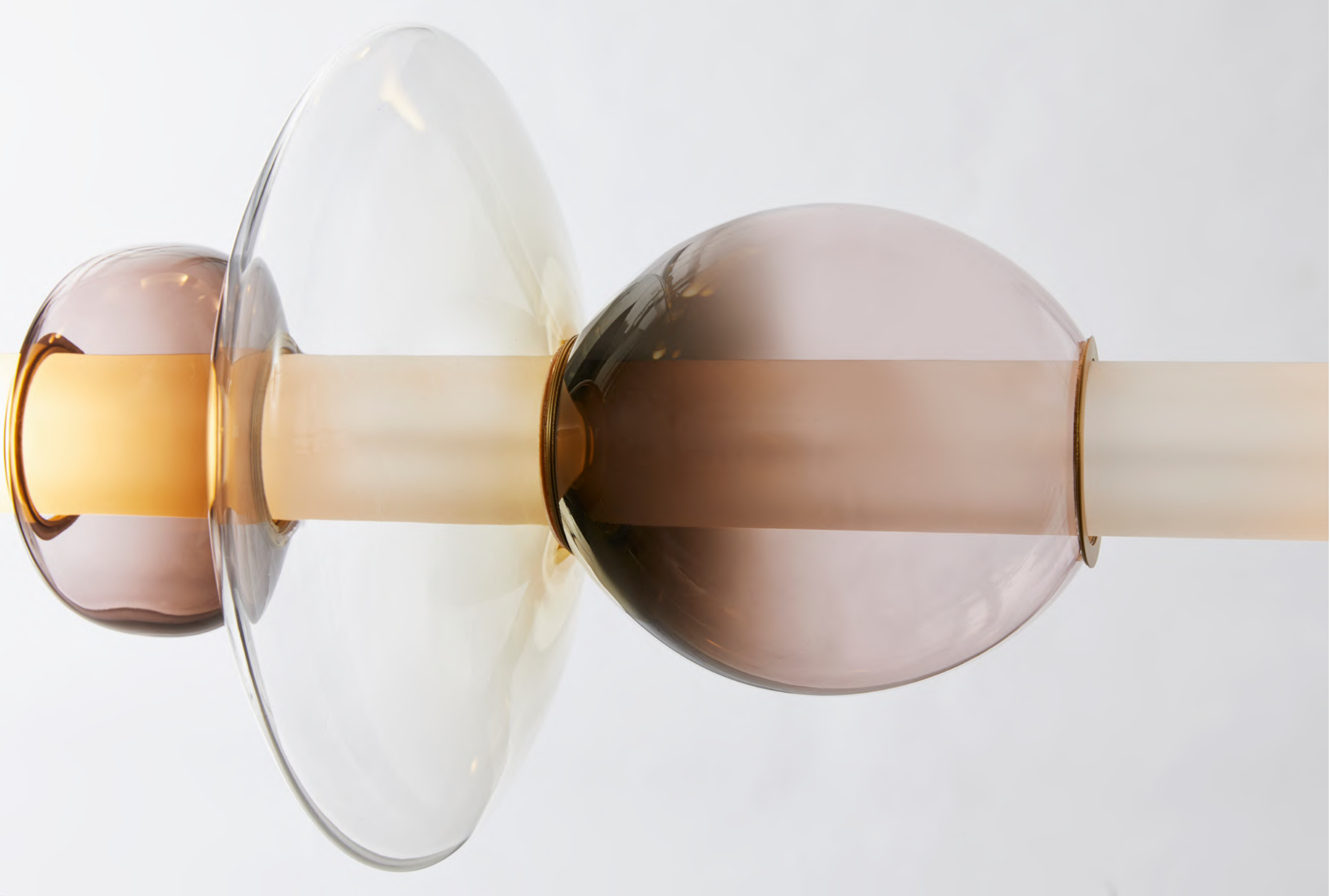


**LUNA Chandelier
Single-Tier**

Blackened Steel Hardware & Smoked Glass

9" x 9" x 48" + DROP
23cm x 23cm x 120.5cm + DROP





LUNA Pendant

Satin Brass Hardware
Various Glass Globe Finishes

12" D x 32"H + DROP
30.5cm D x 81cm D + DROP



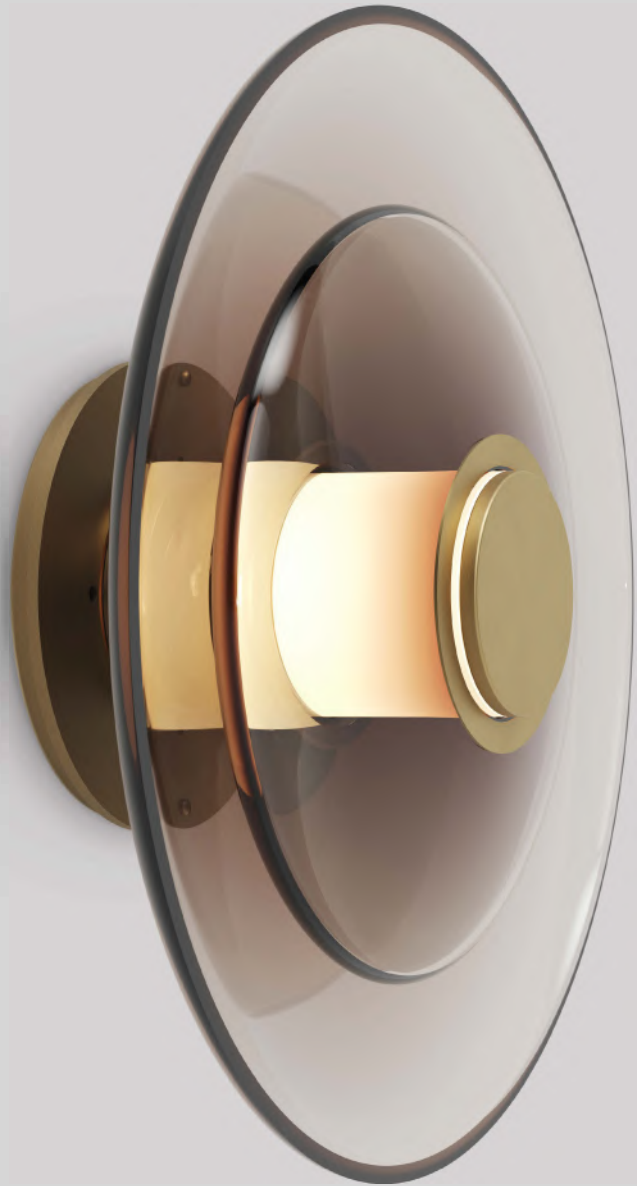
LUNA A SERIES

LUNA A is the first release in the new Gabriel Scott product class, dubbed 'A SERIES' by the studio. This introduction of eight new lighting fixtures is based on the coveted design of the existing LUNA by Gabriel Scott. Inspired by a lunar halo, the elegant shapes of mouth blown glass reference the moon's diffuse light and soft glow. This allusive play of light that is rendered through a coordinated stacking of forms blown by master artisans in various gradient colored glass.

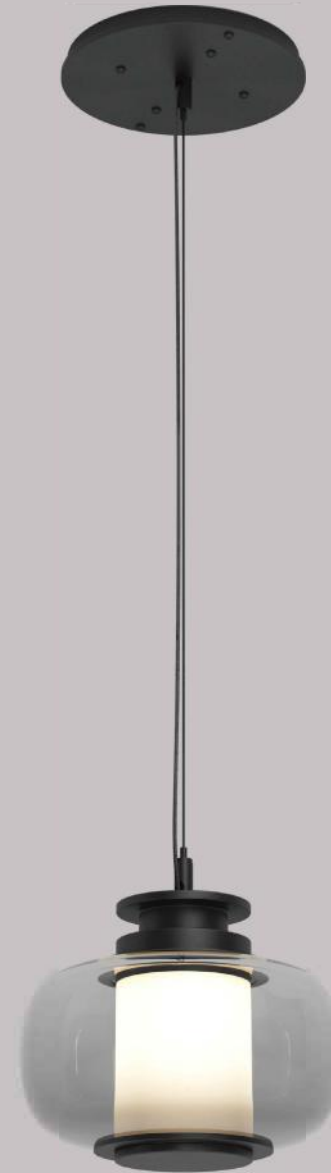
In keeping with the tradition of exquisite craftsmanship for which the studio is renown, the LUNA A paves the way for an innovative approach to accessible luxury to be explored through the new A SERIES.

GABRIEL SCOTT
EST. 2012



Luna Disc Sconce Brass
12" x 12" x 5.6" (304 x 304 x 142mm)



Luna X-Small Pendant Black
6" x 6" x 6.22" (152 x 152 x 158mm)



Luna Small Disc Pendant Bronze
12" x 12" x 10.75" (304 x 304 x 273mm)



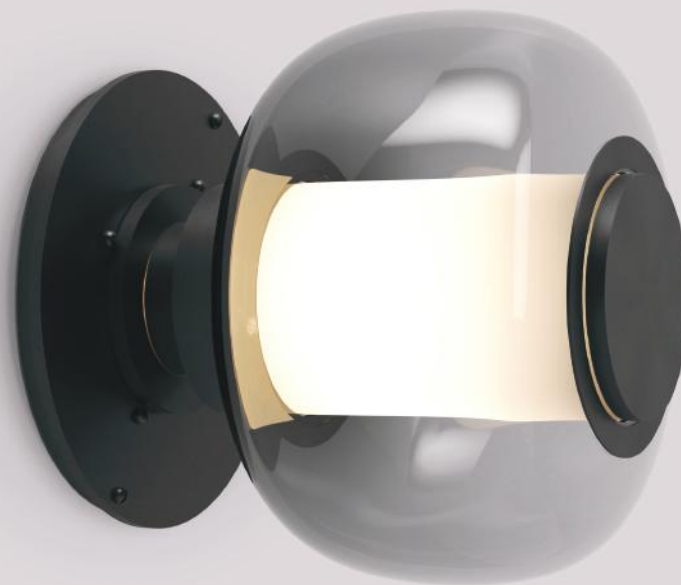
Luna Small Pendant Brass
6" x 6" x 10.75" (152 x 152 x 273mm)







Luna Round Sconce Bronze
8" x 8" x 4.45" (203 x 203 x 113mm)



Luna Small Sconce Black
6" x 6" x 5.6" (152 x 152 x 142mm)



Luna Desk Lamp Black



Luna Desk Lamp Brass
6" x 6" x 4.8" (152 x 152 x 122mm)



The **WELLES** Series

A fixture of metallic proportion, GABRIEL SCOTT's signature WELLES is a modern piece that showcases expert artistry. Hollowed metallic polygons branch out into a modular system of interconnected configurations for a stunning optical illusion. With its endless possibilities, the WELLES floats in the air emitting a cloud of soft light through its multifaceted, sculpturally innovative silhouette. The WELLES is scaled to various shapes and sizes and can be assembled to horizontal, vertical, or diametric applications.

The WELLES has been developed to be highly customizable. Allow our in-house design team to assist in creating the perfect silhouette to match your project's needs. Available in black or white steel, satin brass, satin copper, or satin nickel.

All GABRIEL SCOTT pieces are handmade in Canada.

WELLES Long Chandelier

As shown:
Blackened Steel exterior, Satin Brass interior.
60" x 18" x 18" H + DROP
152.5cm x 45.5cm x 45.5cm H + DROP



Matte White /
Satin Brass



Matte White /
Satin Copper



Matte White /
Satin Nickel



Black Steel /
Satin Brass



Black Steel /
Satin Copper



Black Steel /
Satin Nickel



Satin Brass /
Satin Brass



Satin Copper /
Satin Copper



Satin Nickel /
Satin Nickel







WELLES Central

As shown:
Satin Copper exterior & interior
Satin Brass exterior & interior
28" D x 16" H + STEM
71cm D x 40.5cm H + STEM

WELLES Long Chandelier

As shown:

Matte White exterior, Satin Copper interior

96" x 18" x 18" H + DROP

244cm x 45.5cm x 45.5cm H + DROP





WELLES Wall Sconce

As shown:
Blackened Steel exterior, Satin Brass interior

Single Head: 6" x 6" x 9" from wall
15cm x 15cm x 23cm from wall

Double Head: 6" x 16" x 9" from wall
15cm x 40.5cm x 23cm from wall



The GLASS-WELLES Series

A fixture inspired by jewelry, the WELLES Glass series is the brand's signature piece reinterpreted. The blown-glass collection balances a geo-metric and multifaceted shape with a soft, frosted glass encased in satin metallic prongs. Sculpturally innovative, the WELLES floats in the air diffusing a soft light through its alabaster white or smoked black prismatic glass. An interconnected silhouette in horizontal, vertical, and diametric applications, available as a sconce or desk lamp, the WELLES is a delicate yet striking statement piece with infinite possibilities.

The WELLES has been developed to be highly customizable. Allow our in-house design team to assist in creating the perfect silhouette to match your project's needs. Available in white or smoked glass, with black, brass, copper, or nickel hardware.

All GABRIEL SCOTT pieces are handmade in Canada.

GABRIEL SCOTT
EST. 2012





WELLES-Glass Long Chandelier

As shown:
White Blown-Glass, Satin Brass Hardware
62" x 23" H x 19" + DROP
157.5cm x 58.5cm x 48cm + DROP





Alabaster Glass / Polished Nickel



Alabaster Glass / Polished Copper



Alabaster Glass / Polished Brass



Alabaster Glass / Blackened Steel



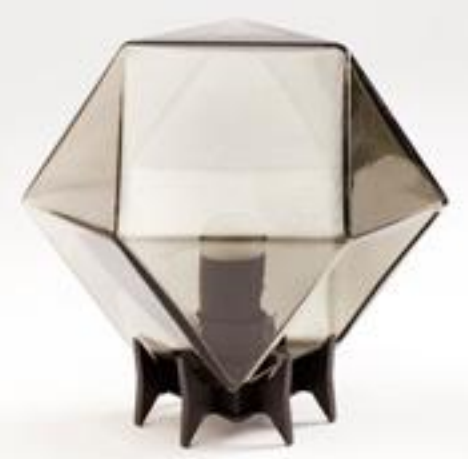
Smoked Glass / Polished Nickel



Smoked Glass / Polished Copper



Smoked Glass / Polished Brass



Smoked Glass / Blackened Steel



WELLES-Glass Wall Sconce

As shown:
White Blown Glass, Satin Copper / Black Hardware
8" x 13.5" x 8" from wall
20.5cm x 33cm x 20.5cm from wall



WELLES Double-Blown Glass Pendants

As shown:
White, Smoked-Gray, and California-Pink
Satin Copper and Satin Brass Hardware

7"Dia x 7.5"H + DROP
18cm D x 19cm H + DROP



**WELLES Double-Blown
Sconce & Hanging-Sconce**

As shown:
White, Smoked-Gray,
Satin Copper and Satin Brass Hardware
7"Diax7.5"H + DROP
18cm D x 19cm H + DROP





The MYRIAD Series

Evoking nature in its most elemental state, the MYRIAD blends sharp, articulated arms with soft, reflective light, for an overall arboreal feel. Lighting inspired by bio-luminescence, this sculptural light fixture diffuses a warm light through its double-blown glass pivoting at the tips of a modular, asymmetric system.

Expert craftsmanship met with clever engineering, the MYRIAD is available in various metal and glass finishes. Custom sizing available.

All GABRIEL SCOTT pieces are handmade in Canada.

GABRIEL SCOTT
EST. 2012





MYRIAD X-Long 13 Chandelier

Satin Brass Frame

White Double-Blown Glass

80" x 20" x 29" H + STEM

203cm x 51cm x 73.5cm H + STEM





GABRIEL SCO





MYRIAD Wishbone Pendant

Black Frame

White Double-Blown Glass

14" x 9" x 30.61" H + STEM

35.5cm x 23cm x 77.5cm H +STEM






The BRIOLETTE Series

A powerful warm light diffused through double-blown glass, the BRIOLETTE showcases striking prismatic contours held by the brand's signature metallic prongs. A dynamic interplay of sharp and delicate, the satin brass, nickel, copper or black steel hardware grips its jewel, drawing the eye to its unforgettable hand-sculpted shape. Double-blown glass is available in alabaster white.

All GABRIEL SCOTT pieces are handmade in Canada.

GABRIEL SCOTT
EST. 2012





BRIOLETTE Small & Large Pendants

Shown in White & Soft Pink Blown-Glass
Satin Brass and Copper hardware
Small: 9" D x 11.5" H + STEM
23cm D x 29cm H + STEM

Large: 13" D x 16.5" H + STEM
33cm D x 42cm H + STEM





The HARLOW Series

A veritable showstopper, the HARLOW Series offers an elegant starburst of light that reflects and refracts through its mold-blown glass shade. A sparkling prism, the HARLOW is directly inspired by the world of jewelry with its metallic frame encasing a translucent glass adding a touch of glamour to any space.

The HARLOW is available in chandelier, pendant, and wall sconce form. Custom sizing available.

All GABRIEL SCOTT pieces are handmade in Canada.

GABRIEL SCOTT
EST. 2012





Large HARLOW Chandelier

Satin Brass Frame

Alabaster-White Blown-Glass

76" x 34" x 42" H + STEM

193cm x 86.5cm x 106.5cm H +STEM



Also shown:
PRONG Console
PRONG Mirror





Large HARLOW Chandelier

Satin Brass Frame
White Blown-Glass

76" x 34" x 42" H + STEM

193cm x 86.5cm x 106.5cm H + STEM



HARLOW Dried Flowers

Satin Copper Frame
White Blown-Glass
28" D x 62" H + STEM
71cm D x 157.5cm H + STEM

Also Shown:
PRONG Dining Table



Small HARLOW Chandelier

As shown:
Satin Brass Frames
White Blown-Glass
32" x 32" x 36" H + STEM
81cm x 81cm x 91.5cm H + STEM





HARLOW Pendants

Satin Brass Frame, White Blown -Glass
Satin Copper Frame, White Blown -Glass

Large: 20" D x 18" H +STEM
51cm x 45.5cm H + STEM

Small: 14" D x 12" H + STEM
35.5cm D x 30.5cm H + STEM



HARLOW Wall-Sconce

As shown:

Satin Copper Frame, White Blown -Glass

Satin Brass Frame, White Blown -Glass

13" x 12" x 6" from wall

33cm x 30.5cm x 15cm from wall





The **KELLY** Chandelier

A chandelier that moves with glamorous intrigue, the KELLY Chandelier's metallic chain cascades through its various layers to create a glisten reflective effect. A bold synergy of cold metal with warm light, the black or brass frame hosts a matching chain that brightens any interior with midnight color. With its Art Deco sensibility, the KELLY Chandelier is a transitional light fixture of exemplary proportion.

Available in small, large, and extra-long. Custom sizes available.

All GABRIEL SCOTT pieces are handmade in Canada.

GABRIEL SCOTT
EST. 2012





KELLY Chandelier Black

Black Steel Blades, Satin Brass Hardware
1/2 Kilometer of Black & Silver Chain
32" x 32" x 40" H + STEM
81cm x 81cm x 101.5cm H + STEM





KELLY Chandelier Brass

Satin Brass Finish Blades & Hardware
1/2 Kilometer of Brass Chain
32" x 32" x 40" H + STEM
81cm x 81cm x 101.5cm H + STEM



KELLY Chandelier X-Long

As shown:
Satin Brass Blades, Hardware & Chain
74"x32"x38"H + STEM

188cm x 81cm x 96.5cm H + STEM





With a background in architecture, industrial design and jewelry making, Scott Richler brings a multidisciplinary set of skills and style to the furniture & lighting world as GABRIEL SCOTT, a chic and contemporary line of furniture and lighting fixtures.

All GABRIEL SCOTT pieces are handmade in their Montreal production studio where the young visionaries work together alongside their in-house team of industrial designers, engineers, and manufacturers to create and oversee each piece from inception to production. GABRIEL SCOTT's studio is located in Montreal's historically rich Garment District, a neighbourhood that pioneered Canadian fashion and design.

Since 2014, the exclusive line has been available to view at their flagship showroom, located in the beautifully restored Brewster Carriage House at the corner of Broome and Mott Streets in downtown Manhattan, and is now available in their London Showroom, Mayfair.





GABRIEL SCOTT

est 2012

